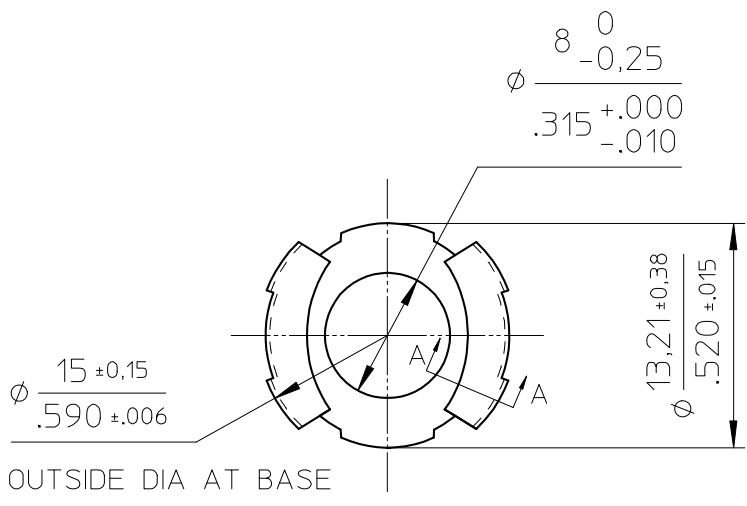
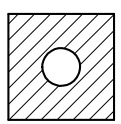
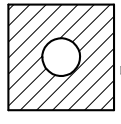
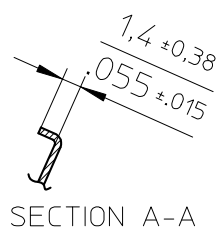
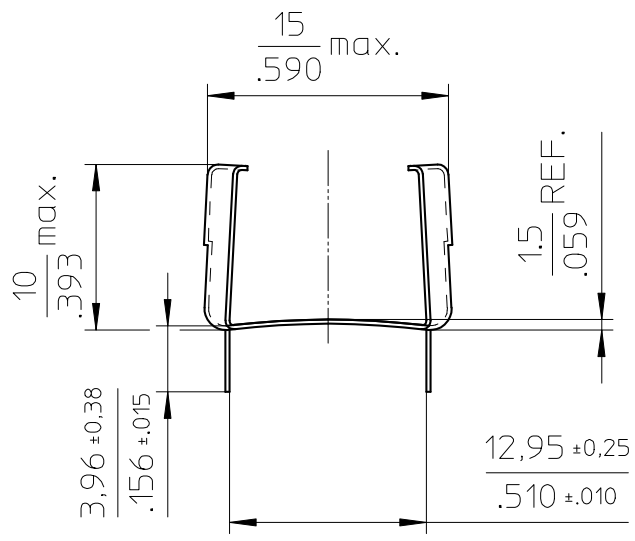
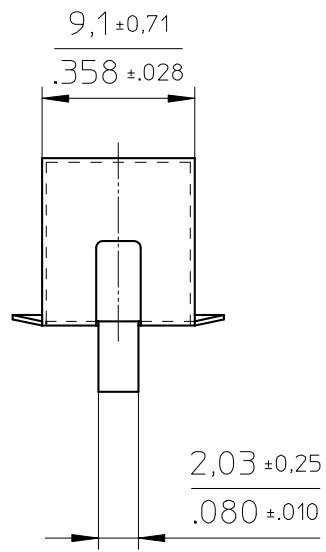


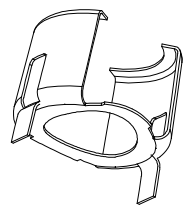
FERROXCUBE



OUTSIDE DIA AT BASE



Material: High carbon steel springsteel thkickness 0.011 inch (0.28 mm)
 austemper Hrc 44-51,
 Ni flash thickness 0.00006-0.00008 inch (1,5 - 2,0 μm)
 Sn electroplated thickness 0.00015-0.0002 inch (4 - 5 μm)



CLASS.NO.		CLM/TP-P14/8-C		4322 021 26151		08-04-10	
						13-03-11	
						28-04-11	
						13-07-11	
				20-08-13			
NAME NAAM	M.Marszalek	SUPERS. VERY.		SH BL.	-		
MPA	CHECK CONTR.	DAT.	2010-04-08	Property of Eigendom van	© FERROXCUBE 2000	A4	